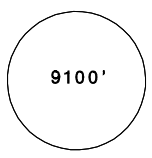
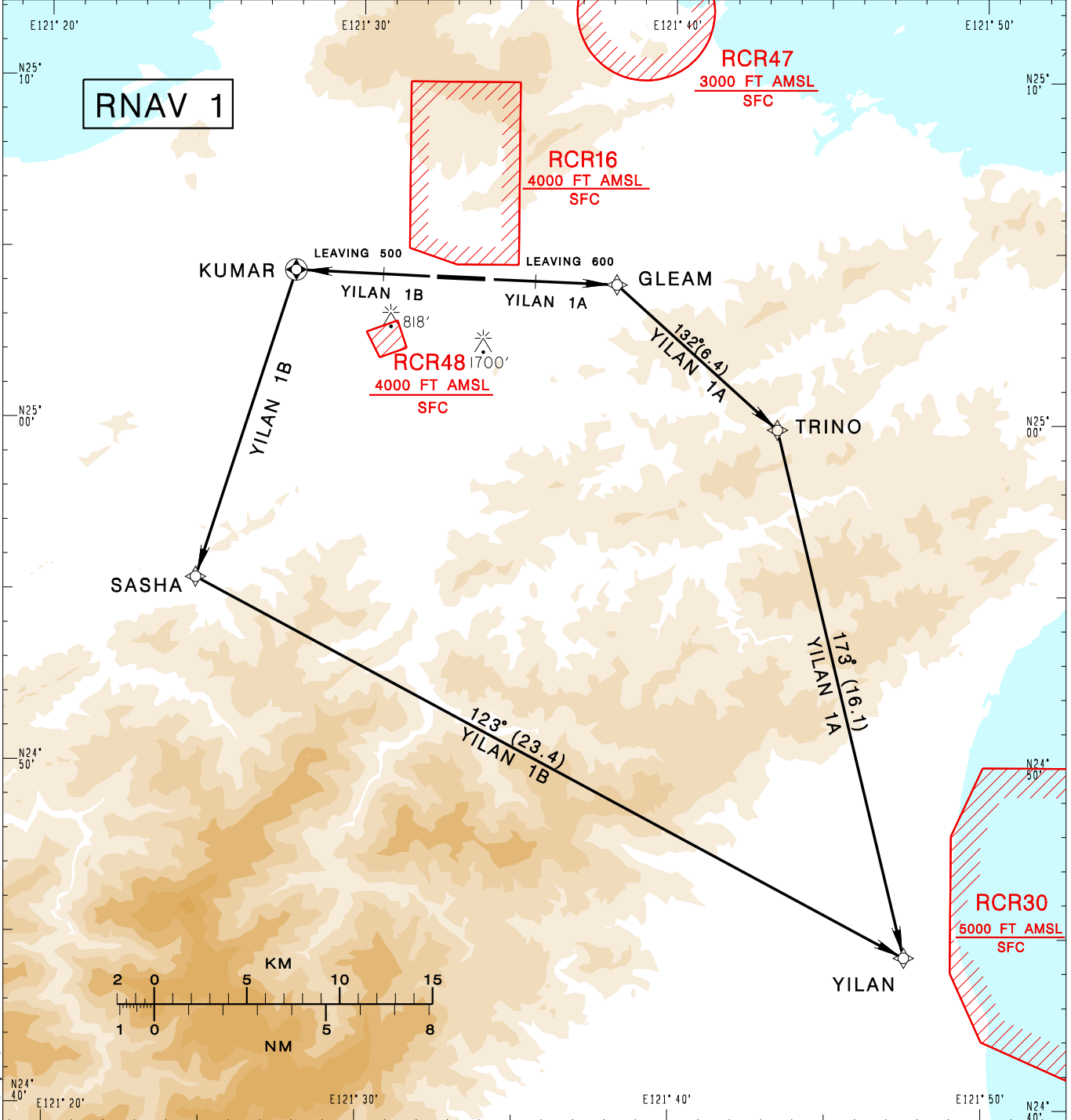


**臺北/松山機場**  
TAIPEI/SONGSHAN AD

RCSS SID  
YILAN 1A RNAV(RWY10)  
YILAN 1B RNAV(RWY28)

TAIPEI APP 119.7 119.6 125.1			SONGSHAN TWR 118.1		ATIS 127.4 341		VAR 5°W-2022 
Apt Elev: 18'		Trans Level: FL130		Trans Alt: 11,000'			
BEARINGS ARE MAGNETIC; DISTANCES ARE NAUTICAL MILES; ELEVATIONS, HEIGHTS IN FEET							



CHANGES: MAG VAR AND TRACK; NOTE 7

**YILAN ONE ALFA RNAV DEPARTURE**  
Climb on RWY HDG until leaving 600ft,  
then direct to GLEAM, TRINO, YILAN to join B591.

**YILAN ONE BRAVO RNAV DEPARTURE**  
Climb on RWY HDG until leaving 500ft,  
then direct to KUMAR, SASHA, YILAN to join B591

- NOTE**
- 1.YILAN 1A: Requires a minimum climb gradient of 6.1% (371ft/NM) until TRINO.
  - 2.YILAN 1B: Requires a minimum climb gradient of 5% (304ft/NM) until YILAN or 7000ft.
  - 3.Caution high terrain around airport.
  - 4.A 1700ft-high BLDG at 2.1NM south of THR 28.
  - 5.A 818ft-high BLDG at 2NM SW of THR 10.
  - 6.Critical DME & DME gap not surveyed.
  - 7.ATS surveillance required.